



# J&M 100K TOP DRIVE AUGER

DEEP FOUNDATION  
SOLUTIONS



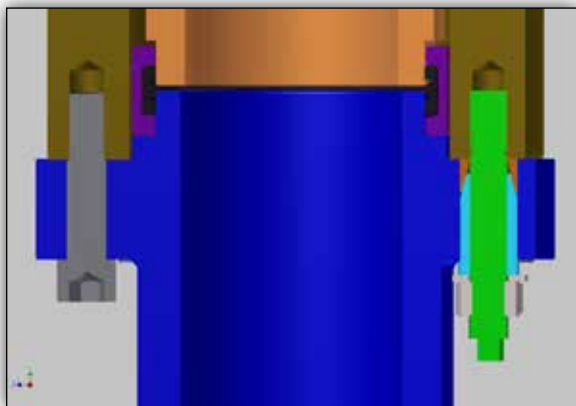
**800-248-8498**

**WWW.APEVIBRO.COM**

The APE product line is protected by, but not limited to the following patent numbers:  
5088565A, 5117925A, 5263544A, 5529132A, 5544979A, 5609380A, 5653556A,  
5794716A, 6039508A, 6386295B1, 6427402B1, 6431795B2, 6447036B1, 6543966B2,  
6648556B1, 6672805B1, 6732483B1, 6736218B1, 6896448B1, 6908262B1, 6942430B1,  
6988564B2, 7168890B1, 7392855B1, 7694747B1, 7708499B1, 7824132B1, 7854871B1,  
7913771B2, 7950876B2, 7950877B2, 8070391B2, 8181713B2, 8186452B1, 8434969B2,  
8496072B2, 20090200055A1. For a more detailed information and a more comprehensive  
list of APE patents please visit the website at [www.apevibro.com/ver2/APEPatents.asp](http://www.apevibro.com/ver2/APEPatents.asp).

# J&M 100K TOP DRIVE AUGER

The 100K is built with time proven technology and job site reliability that a J&M drill provides. APE 3" and new 5" swivels accommodate both grout and concrete, plus steel member insertion. Open access frame for easy maintenance and cleaning. Advanced flighting connection system. All maintenance parts available domestically and common to other J&M models. The only real 110,000 ft. lb. CFA top drive produced in the USA.



100K Specifications		Standard	Metric
Low Speed High Torque	Torque	110,000 ft-lbs	15,208 kgm
	Max Pressure	4,500 psi	310 bar
	Rotation Speed	23 rpm	
	Max Flow	196 gpm	745 lpm
High Speed Low Torque	Torque	55,000 ft-lbs	7,604 kgm
	Max Pressure	4,500 psi	310 bar
	Rotation Speed	46 rpm	
	Max Flow	196 gpm	745 lpm
Crowd Force		80,000 lbs	36,287 kg
Suspended Weight		9,500 lbs	4,309 kg
Length		62 in	1,575 cm
Width (Lead Section)		37 in	940 cm
Width (Hose Bracket Included)		79 in	2,007 cm
Height		127 in	3,226 cm
ID of Output Shaft		7 in	187 cm
ID of Rotary Joint		3 & 5 in	76 & 127 cm
Flighting Adapter		200 mm Male Hex	
Lead Adapters		U-37, ST-150, ST-190	

