



SERVICE BULLETIN

VIBRATORY HAMMERS • POWER UNITS/AUGER SYSTEMS • DIESEL & HYDRAULIC HAMMERS
DRILL RIGS • HYDRAULIC PILING RIGS • WICK DRAIN INSTALLERS • LEAD SYSTEMS



www.apevibro.com

www.jandm-usa.com

This document will be teaching you how to install the Danfoss software, update the Control Panel Controller, and Control Panel Display. You will need the following items;

- Danfoss Controller Update Cable #1001190
- A USB Thumb Drive “Display Update”
- You will need to install the following programs & drivers;
 - Danfoss Plus+1 Plus+ 1 Guide
 - Danfoss Plus+1 Plus+ 1 Service Tool
 - Danfoss Plus+ 1 Drivers



Installing the Danfoss Plus+1 Service Tool Program on your laptop.

- You will need to install the Danfoss Plus+1 Service tool Program onto your computer
- Type this URL text into your web browser or copy and paste this from the email sent.
 - <http://powersolutions.danfoss.com/products/plus-1-software/plus-1-guide-software-and-license/#/>
 - Scroll down and click to download the Express Version of the Service Tool

PLUS+1® software products

Service Tool



Express

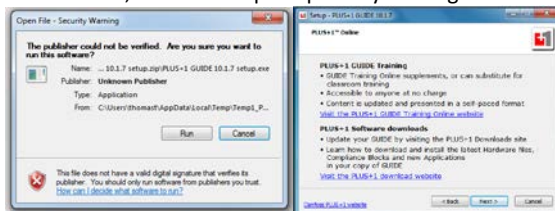
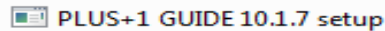


- Includes free 90-day Professional Trial
- Easy graphical programming interface
- Fully functional with core tools

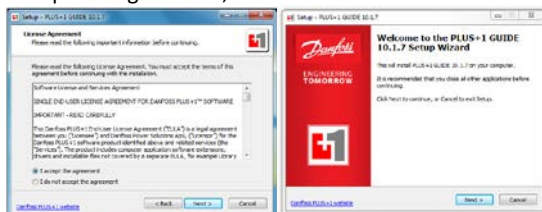
Download

- Save the software onto the Desktop.
- The software could take up to 30 mins to download “522MB”

- Once the download is finished, open the Plus+1 Guide 10.1.7 Setup
- Click on Run, then follow prompt to by clicking next.



- Accept the agreement, Click Next



- Follow the Prompt to complete the install.

APE HEADQUARTERS

7032 S 196TH STREET
KENT, WA 98032
(800) 248-8498 • (253) 872-0141
FAX (253) 872-8710

NORTHEAST REGIONAL OFFICE

401 HARTLE ST.
SAYREVILLE, NJ 08872
(888) 217-7524 • (732) 432-6604
FAX (732) 432-6608

APE CHINA

BUILDING NO. 233, FU QIAO ROAD
GU CUN INDUSTRIAL ZONE BAOSHAN DISTRICT
SHANGHAI, CHINA 201906
011-86-21-5677-1221
FAX 011-86-21-3604-0553

LOUISIANA REGIONAL OFFICE

39266 A DOYLE DRIVE
GONZALES, LA 70737
(225) 644-7722
FAX (225) 644-7626

GULF REGIONAL OFFICE

3975 FM HWY 1485
CONROE, TX 77306
(800) 596-2877 • (936) 271-1044
FAX (936) 271-1046

MID-ATLANTIC REGIONAL OFFICE

500 NEWTON ROAD, #200
VIRGINIA BEACH, VA 23462
(866) 399-7500 • (757) 518-9740
FAX (757) 518-9741

SOUTHEAST REGIONAL OFFICE

1345 INDUSTRIAL PARK ROAD
MULBERRY, FL 33860
(800) 570-3844 • (863) 324-0378
FAX (863) 318-9409

MID-WESTERN REGIONAL OFFICE

50 GERBER INDUSTRIAL DR.
ST. PETERS, MO 63376
(877) 296-8044 • (636) 397-8400
FAX (636) 278-4278

WESTERN REGIONAL OFFICE

2985 LOOMIS ROAD
STOCKTON, CA 95205
(888) 245-4401 • (209) 942-2166
FAX (209) 942-2455



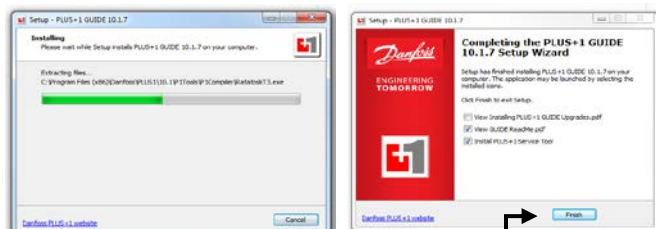
SERVICE BULLETIN

VIBRATORY HAMMERS • POWER UNITS/AUGER SYSTEMS • DIESEL & HYDRAULIC HAMMERS
DRILL RIGS • HYDRAULIC PILING RIGS • WICK DRAIN INSTALLERS • LEAD SYSTEMS

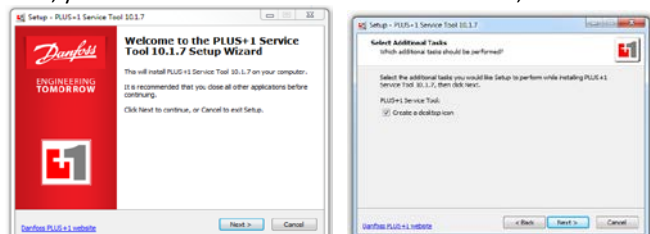


www.apevibro.com

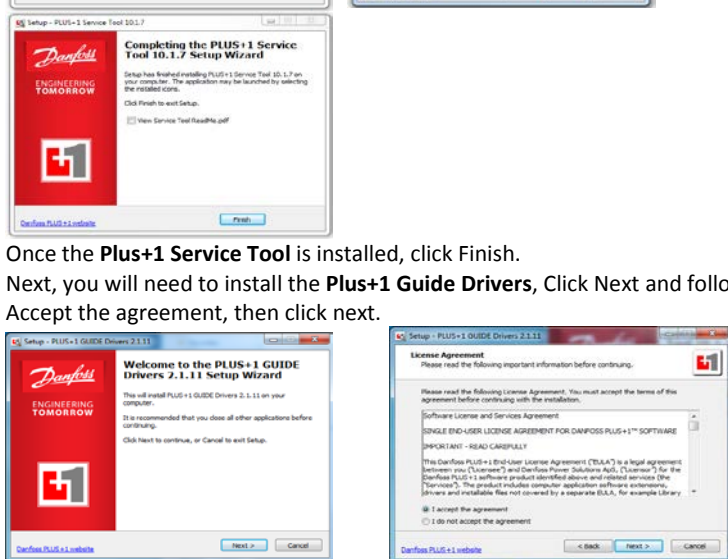
www.jandm-usa.com



- Once the Plus+1 Guide is installed, click Finish.
- Next, you will need to install the **Plus+1 Service Tool**, Click Next and follow the Prompt to install.



- Once the **Plus+1 Service Tool** is installed, click Finish.
- Next, you will need to install the **Plus+1 Guide Drivers**, Click Next and follow the Prompt to install.
- Accept the agreement, then click next.



- After clicking on Next, continue to follow the prompt to install the driver.
- A window security Prompt will pop up. Click the Install button.
- Another window will pop up to prompt you to install the **CG150/CG150-2 Drivers**
- Click the install button.



- Click Finish when completed.

APE HEADQUARTERS
7032 S 196TH STREET
KENT, WA 98032
(800) 248-8498 • (253) 872-0141
FAX (253) 872-8710

NORTHEAST REGIONAL OFFICE
401 HARTLE ST.
SAYREVILLE, NJ 08872
(888) 217-7524 • (732) 432-6604
FAX (732) 432-6608

APE CHINA
BUILDING No. 233, FU QIAO ROAD
GU CUN INDUSTRIAL ZONE BAOSHAN DISTRICT
SHANGHAI, CHINA 201906
011-86-21-5677-1221
FAX 011-86-21-3604-0553

LOUISIANA REGIONAL OFFICE
39266 A DOYLE DRIVE
GONZALES, LA 70737
(225) 644-7722
FAX (225) 644-7626

GULF REGIONAL OFFICE
3975 FM HWY 1485
CONROE, TX 77306
(800) 596-2877 • (936) 271-1044
FAX (936) 271-1046

MID-ATLANTIC REGIONAL OFFICE
500 NEWTON ROAD, #200
VIRGINIA BEACH, VA 23462
(866) 399-7500 • (757) 518-9740
FAX (757) 518-9741

SOUTHEAST REGIONAL OFFICE
1345 INDUSTRIAL PARK ROAD
MULBERRY, FL 33860
(800) 570-3844 • (863) 324-0378
FAX (863) 318-9409

MID-WESTERN REGIONAL OFFICE
50 GERBER INDUSTRIAL DR.
ST. PETERS, MO 63376
(877) 296-8044 • (636) 397-8400
FAX (636) 278-4278

WESTERN REGIONAL OFFICE
2985 LOOMIS ROAD
STOCKTON, CA 95205
(888) 245-4401 • (209) 942-2166
FAX (209) 942-2455



SERVICE BULLETIN

VIBRATORY HAMMERS • POWER UNITS/AUGER SYSTEMS • DIESEL & HYDRAULIC HAMMERS
DRILL RIGS • HYDRAULIC PILING RIGS • WICK DRAIN INSTALLERS • LEAD SYSTEMS

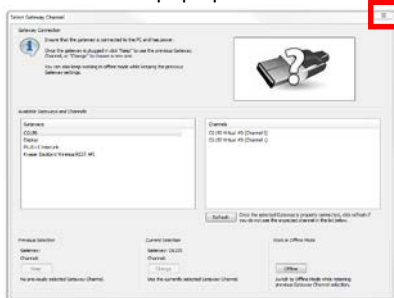


www.apevibro.com

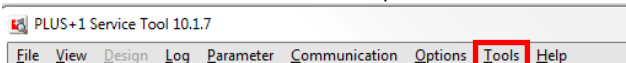
www.jandm-usa.com



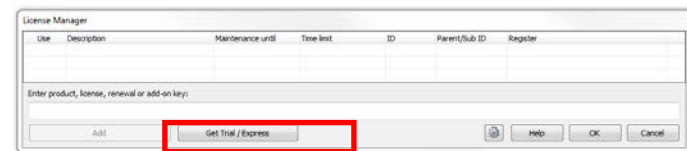
- You have now completed installing the drivers.
- **Open the Plus+1 Service Tool on the Desktop.**
- Open up Danfoss Plus+1 Service Tool Program. →
 - This screen will pop up. Close out that box



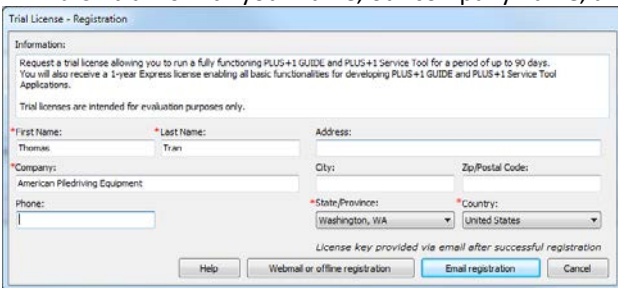
- Go to the "Tool's tab" located at the top of the screen



- Then select License Manager
- Click on "Get Trial / Express"



- Fill in the *blanks with your name, our company name, and click on Email registration.



- A Prompt will pop up to generate an email, Press OK.

APE HEADQUARTERS
7032 S 196TH STREET
KENT, WA 98032
(800) 248-8498 • (253) 872-0141
FAX (253) 872-8710

NORTHEAST REGIONAL OFFICE
401 HARTLE ST.
SAYREVILLE, NJ 08872
(888) 217-7524 • (732) 432-6604
FAX (732) 432-6608

APE CHINA
BUILDING No. 233, FU QIAO ROAD
GU CUN INDUSTRIAL ZONE BAOSHAN DISTRICT
SHANGHAI, CHINA 201906
011-86-21-5677-1221
FAX 011-86-21-3604-0553

LOUISIANA REGIONAL OFFICE
39266 A DOYLE DRIVE
GONZALES, LA 70737
(225) 644-7722
FAX (225) 644-7626

GULF REGIONAL OFFICE
3975 FM HWY 1485
CONROE, TX 77306
(800) 596-2877 • (936) 271-1044
FAX (936) 271-1046

MID-ATLANTIC REGIONAL OFFICE
500 NEWTON ROAD, #200
VIRGINIA BEACH, VA 23462
(866) 399-7500 • (757) 518-9740
FAX (757) 518-9741

SOUTHEAST REGIONAL OFFICE
1345 INDUSTRIAL PARK ROAD
MULBERRY, FL 33860
(800) 570-3844 • (863) 324-0378
FAX (863) 318-9409

MID-WESTERN REGIONAL OFFICE
50 GERBER INDUSTRIAL DR.
ST. PETERS, MO 63376
(877) 296-8044 • (636) 397-8400
FAX (636) 278-4278

WESTERN REGIONAL OFFICE
2985 LOOMIS ROAD
STOCKTON, CA 95205
(888) 245-4401 • (209) 942-2166
FAX (209) 942-2455



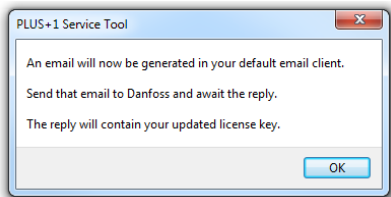
SERVICE BULLETIN

VIBRATORY HAMMERS • POWER UNITS/AUGER SYSTEMS • DIESEL & HYDRAULIC HAMMERS
DRILL RIGS • HYDRAULIC PILING RIGS • WICK DRAIN INSTALLERS • LEAD SYSTEMS

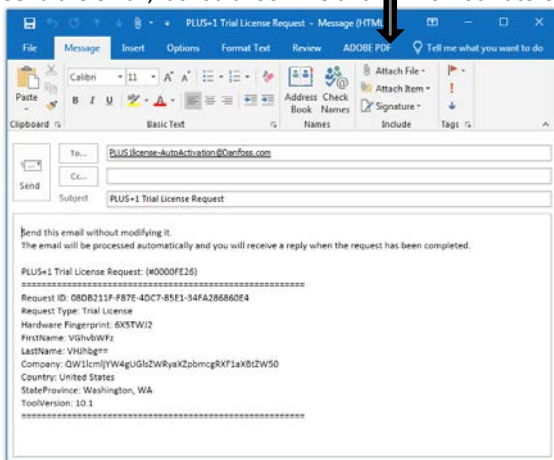


www.apevibro.com

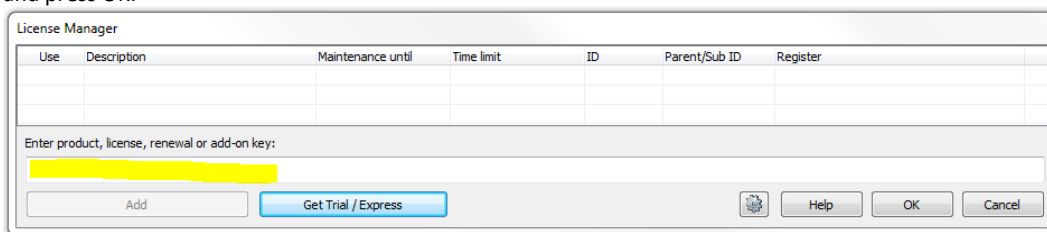
www.jandm-usa.com



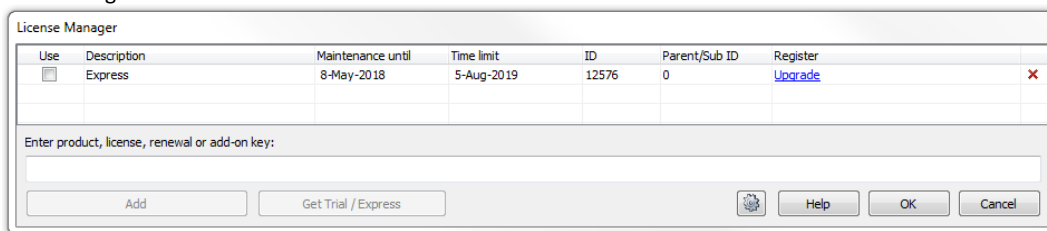
-
- Click OK and your Outlook should pop up to send an email.
- Send the email, it should look like this. **Do Not Auto Correct the Grammar**



-
- Once the email is sent, you should be getting a response with the Product License for an Express License Key.
- **NOTE:** You could receive an email in the next 2 mins up to 2 days.
- Once you receive the Product License, Copy and Paste the Express Key into the License Manager “highlighted in yellow below” and press OK.



-
- Press OK again.



-
- You have now completed the Danfoss Service tool installation.

APE HEADQUARTERS

7032 S 196TH STREET
KENT, WA 98032
(800) 248-8498 • (253) 872-0141
Fax (253) 872-8710

NORTHEAST REGIONAL OFFICE

401 HARTLE ST.
SAYREVILLE, NJ 08872
(888) 217-7524 • (732) 432-6604
Fax (732) 432-6608

APE CHINA

BUILDING No. 233, FU QIAO ROAD
GU CUN INDUSTRIAL ZONE BAOSHAN DISTRICT
SHANGHAI, CHINA 201906
011-86-21-5677-1221
Fax 011-86-21-3604-0553

LOUISIANA REGIONAL OFFICE

39266 A DOYLE DRIVE
GONZALES, LA 70737
(225) 644-7722
Fax (225) 644-7626

GULF REGIONAL OFFICE

3975 FM Hwy 1485
CONROE, TX 77306
(800) 596-2877 • (936) 271-1044
Fax (936) 271-1046

MID-ATLANTIC REGIONAL OFFICE

500 NEWTON ROAD, #200
VIRGINIA BEACH, VA 23462
(866) 399-7500 • (757) 518-9740
Fax (757) 518-9741

SOUTHEAST REGIONAL OFFICE

1345 INDUSTRIAL PARK ROAD
MULBERRY, FL 33860
(800) 570-3844 • (863) 324-0378
Fax (863) 318-9409

MID-WESTERN REGIONAL OFFICE

50 GERBER INDUSTRIAL DR.
ST. PETERS, MO 63376
(877) 296-8044 • (636) 397-8400
Fax (636) 278-4278

WESTERN REGIONAL OFFICE

2985 LOOMIS ROAD
STOCKTON, CA 95205
(888) 245-4401 • (209) 942-2166
Fax (209) 942-2455



www.apevibro.com

SERVICE BULLETIN

VIBRATORY HAMMERS • POWER UNITS/AUGER SYSTEMS • DIESEL & HYDRAULIC HAMMERS
DRILL RIGS • HYDRAULIC PILING RIGS • WICK DRAIN INSTALLERS • LEAD SYSTEMS



www.jandm-usa.com

Updating the Controller

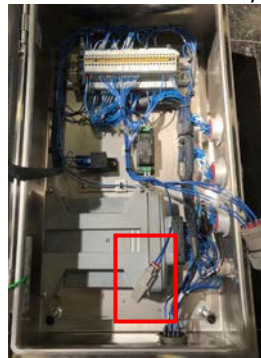
- o First you will need the Danfoss Control Panel Controller Update file **"019122.lhx"** (**Current Version**) and the Danfoss Controller Cable.
 - o Take out the Danfoss Controller Cable #1001190 out of the box.



- o Open the Control Panel by turning the two flat screws on the front cover counter-clockwise.



- o Remove the male dummy plug to the Deutsch connector inside the panel.



- o Plug the Deutsch end of the Danfoss controller cable to the Deutsch plug inside of the Control panel.
- o Close the control panel cover lightly, to avoid pinching the cable.
- o Turn on the power switch to control panel.
- o Plug in the USB side of Danfoss Controller Cable to the computer.
- o Click on the Danfoss program **019122.lhx** file (Example) that was emailed to you.
- o Danfoss will automatically start.



APE HEADQUARTERS
7032 S 196TH STREET
KENT, WA 98032
(800) 248-8498 • (253) 872-0141
Fax (253) 872-8710

NORTHEAST REGIONAL OFFICE
401 HARTLE ST.
SAYREVILLE, NJ 08872
(888) 217-7524 • (732) 432-6604
Fax (732) 432-6608

APE CHINA
BUILDING No. 233, FU QIAO ROAD
GU CUN INDUSTRIAL ZONE BAOSHAN DISTRICT
SHANGHAI, CHINA 201906
011-86-21-5677-1221
Fax 011-86-21-3604-0553

LOUISIANA REGIONAL OFFICE
39266 A DOYLE DRIVE
GONZALES, LA 70737
(225) 644-7722
Fax (225) 644-7626

GULF REGIONAL OFFICE
3975 FM Hwy 1485
CONROE, TX 77306
(800) 596-2877 • (936) 271-1044
Fax (936) 271-1046

MID-ATLANTIC REGIONAL OFFICE
500 NEWTON ROAD, #200
VIRGINIA BEACH, VA 23462
(866) 399-7500 • (757) 518-9740
Fax (757) 518-9741

SOUTHEAST REGIONAL OFFICE
1345 INDUSTRIAL PARK ROAD
MULBERRY, FL 33860
(800) 570-3844 • (863) 324-0378
Fax (863) 318-9409

MID-WESTERN REGIONAL OFFICE
50 GERBER INDUSTRIAL DR.
ST. PETERS, MO 63376
(877) 296-8044 • (636) 397-8400
Fax (636) 278-4278

WESTERN REGIONAL OFFICE
2985 LOOMIS ROAD
STOCKTON, CA 95205
(888) 245-4401 • (209) 942-2166
Fax (209) 942-2455



www.apevibro.com

SERVICE BULLETIN

VIBRATORY HAMMERS • POWER UNITS/AUGER SYSTEMS • DIESEL & HYDRAULIC HAMMERS
DRILL RIGS • HYDRAULIC PILING RIGS • WICK DRAIN INSTALLERS • LEAD SYSTEMS



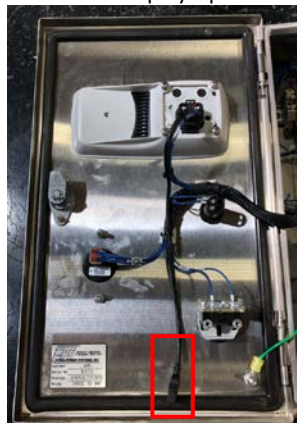
www.jandm-usa.com



-
- Click Next on the first prompt.
- It's going to give you a warning because it's a new program.
- Click OK and start download.
- Be patient for the software to update.
- Once the Software is updated. Click OK and close out the program and file.
- Turn off the Power to the control panel.
- Disconnect the Danfoss Controller Cable from the computer and Control panel.
- Plug the male dummy plug back into the female Duetsch end inside the control panel.
- Close the control panel and turn the two-flat screw on the front cover clockwise.
- You have now completed updating the Controller Software.

Updating the Display

- You will need the "Display Update" USB thumb drive to update the display.
 - Open the Control Panel by turning the two flat screws on the front cover counter-clockwise.
 - Insert the "Display Update" USB thumb drive into the **USB plug** behind the front cover.



-
- Close the cover.
- Hold the upper two left **buttons** on the display and turn on the power on. Continue to **HOLD** until you get the maintenance screen.

APE HEADQUARTERS

7032 S 196TH STREET
KENT, WA 98032
(800) 248-8498 • (253) 872-0141
Fax (253) 872-8710

NORTHEAST REGIONAL OFFICE

401 HARTLE ST.
SAYREVILLE, NJ 08872
(888) 217-7524 • (732) 432-6604
Fax (732) 432-6608

APE CHINA

BUILDING NO. 233, FU QIAO ROAD
GU CUN INDUSTRIAL ZONE BAOSHAN DISTRICT
SHANGHAI, CHINA 201906
011-86-21-5677-1221
Fax 011-86-21-3604-0553

LOUISIANA REGIONAL OFFICE

39266 A DOYLE DRIVE
GONZALES, LA 70737
(225) 644-7722
Fax (225) 644-7626

GULF REGIONAL OFFICE

3975 FM HWY 1485
CONROE, TX 77306
(800) 596-2877 • (936) 271-1044
Fax (936) 271-1046

MID-ATLANTIC REGIONAL OFFICE

500 NEWTON ROAD, #200
VIRGINIA BEACH, VA 23462
(866) 399-7500 • (757) 518-9740
Fax (757) 518-9741

SOUTHEAST REGIONAL OFFICE

1345 INDUSTRIAL PARK ROAD
MULBERRY, FL 33860
(800) 570-3844 • (863) 324-0378
Fax (863) 318-9409

MID-WESTERN REGIONAL OFFICE

50 GERBER INDUSTRIAL DR.
ST. PETERS, MO 63376
(877) 296-8044 • (636) 397-8400
Fax (636) 278-4278

WESTERN REGIONAL OFFICE

2985 LOOMIS ROAD
STOCKTON, CA 95205
(888) 245-4401 • (209) 942-2166
Fax (209) 942-2455



www.apevibro.com



SERVICE BULLETIN

VIBRATORY HAMMERS • POWER UNITS/AUGER SYSTEMS • DIESEL & HYDRAULIC HAMMERS
DRILL RIGS • HYDRAULIC PILING RIGS • WICK DRAIN INSTALLERS • LEAD SYSTEMS



www.jandm-usa.com



-
- Then release the top two left buttons and wait for the display to update
- Be Patient, it can take about 5 mins up to 15 mins.
- Once the update is complete the display should reboot itself.
- Now hold the top two left buttons on the display until you go into the set-up screen
- Press the upper left Button. 
- Verify you're your Software is correct;
 - HMI Software is Version: 2.6 (Example)
 - Controller Software is Version: 3.8 (Example)
 - HPS Preferences #: 019107 (Example)
- Press the X button twice to go back to your home screen. 
- Turn the Power off.
- Open the control panel and remove the "Display Update" USB Thumb drive.
- Close the Control panel and turn the two-flat screw on the front cover clockwise.
- You have now completed updating the Display Software.

APE HEADQUARTERS
7032 S 196TH STREET
KENT, WA 98032
(800) 248-8498 • (253) 872-0141
Fax (253) 872-8710

NORTHEAST REGIONAL OFFICE
401 HARTLE ST.
SAYREVILLE, NJ 08872
(888) 217-7524 • (732) 432-6604
Fax (732) 432-6608

APE CHINA
BUILDING NO. 233, FU QIAO ROAD
GU CUN INDUSTRIAL ZONE BAOSHAN DISTRICT
SHANGHAI, CHINA 201906
011-86-21-5677-1221
Fax 011-86-21-3604-0553

LOUISIANA REGIONAL OFFICE
39266 A DOYLE DRIVE
GONZALES, LA 70737
(225) 644-7722
Fax (225) 644-7626

GULF REGIONAL OFFICE
3975 FM Hwy 1485
CONROE, TX 77306
(800) 596-2877 • (936) 271-1044
Fax (936) 271-1046

MID-ATLANTIC REGIONAL OFFICE
500 NEWTON ROAD, #200
VIRGINIA BEACH, VA 23462
(866) 399-7500 • (757) 518-9740
Fax (757) 518-9741

SOUTHEAST REGIONAL OFFICE
1345 INDUSTRIAL PARK ROAD
MULBERRY, FL 33860
(800) 570-3844 • (863) 324-0378
Fax (863) 318-9409

MID-WESTERN REGIONAL OFFICE
50 GERBER INDUSTRIAL DR.
ST. PETERS, MO 63376
(877) 296-8044 • (636) 397-8400
Fax (636) 278-4278

WESTERN REGIONAL OFFICE
2985 LOOMIS ROAD
STOCKTON, CA 95205
(888) 245-4401 • (209) 942-2166
Fax (209) 942-2455