



www.apevibro.com

SERVICE BULLETIN

VIBRATORY HAMMERS • POWER UNITS/AUGER SYSTEMS • DIESEL & HYDRAULIC HAMMERS
DRILL RIGS • HYDRAULIC PILING RIGS • WICK DRAIN INSTALLERS • LEAD SYSTEMS

Nov. 26, 2014



www.jandm-usa.com

#4 55 Auto Torque / Setting Start of Stroke

1. Insert flow meter and needle valve in the return drive line at power unit. (See PIC 1)
2. Install 3000 P.S.I. gauge in "X" port on each of the motors to see stroke pilot pressure. (See PIC 2)
3. Start drill in FORWARD with control switch in the AUTO position.
4. Use needle valve to set drive pressure at 2800 p.s.i.
5. When the drill strokes / p.s.i. seen on "X" port, it goes to full displacement. (Full displacement = maximum torque / slower speed)
6. Use adjustment screw to set the stroke while power unit is running at 1500 RPM. (See PIC 3)
7. Turn adjustment screw in to start stroke sooner / lower p.s.i.
8. Turn adjustment screw out to start stroke later / higher p.s.i.
9. When you see the gauge start to move stop turning adjustment screw. Turn adjustment screw back in just to remove pressure on the gauge and lock adjustment screw.
10. Repeat on second motor setting.
11. After the pressures are set open needle valve to relieve drive pressure and bring back up slowly to 2800.
12. Watch motor gauges and make sure motors stroke at the same time.
13. After the pressures are set test speed of the drill and the three



PIC 1



PIC 2



PIC 3

APE HEADQUARTERS
7032 S 196TH STREET
KENT, WA 98032
(800) 248-8498 • (253) 872-0141
Fax (253) 872-8710

NORTHEAST REGIONAL OFFICE
401 HARTLE ST.
SAYREVILLE, NJ 08872
(888) 217-7524 • (732) 432-6604
Fax (732) 432-6608

APE CHINA
BUILDING No. 233, FU QIAO ROAD
GU CUN INDUSTRIAL ZONE BAOSHAN DISTRICT
SHANGHAI, CHINA 201906
011-86-21-5677-1221
Fax 011-86-21-3604-0553

LOUISIANA REGIONAL OFFICE
39266 A DOYLE DRIVE
GONZALES, LA 70737
(225) 644-7722
Fax (225) 644-7626

GULF REGIONAL OFFICE
3975 FM Hwy 1485
CONROE, TX 77306
(800) 596-2877 • (936) 271-1044
Fax (936) 271-1046

MID-ATLANTIC REGIONAL OFFICE
500 NEWTON ROAD, #200
VIRGINIA BEACH, VA 23462
(866) 399-7500 • (757) 518-9740
Fax (757) 518-9741

SOUTHEAST REGIONAL OFFICE
1345 INDUSTRIAL PARK ROAD
MULBERRY, FL 33860
(800) 570-3844 • (863) 324-0378
Fax (863) 318-9409

MID-WESTERN REGIONAL OFFICE
50 GERBER INDUSTRIAL DR.
ST. PETERS, MO 63376
(877) 296-8044 • (636) 397-8400
Fax (636) 278-4278

WESTERN REGIONAL OFFICE
2985 LOOMIS ROAD
STOCKTON, CA 95205
(888) 245-4401 • (209) 942-2166
Fax (209) 942-2455



www.apevibro.com

SERVICE BULLETIN

VIBRATORY HAMMERS • POWER UNITS/AUGER SYSTEMS • DIESEL & HYDRAULIC HAMMERS
 DRILL RIGS • HYDRAULIC PILING RIGS • WICK DRAIN INSTALLERS • LEAD SYSTEMS



www.jandm-usa.com

speeds as stated below.

Control switch positions

AUTO = full speed until pressure reaches stroke setting then slows and goes to full torque

MAX = Max torque / Full displacement

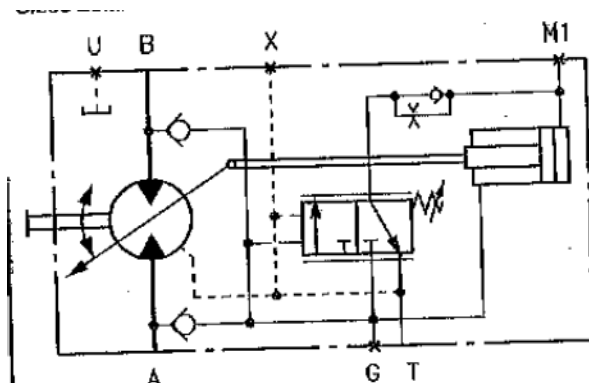
HALF = Half pump flow goes to drill and runs at Max torque / Full displacement

RPM

73

25

13



Schematic of the motor

“AS SOON AS YOU SEE A MISTAKE AND DON’T FIX IT, IT BECOMES YOUR MISTAKE.”

APE HEADQUARTERS

7032 S 196TH STREET
 KENT, WA 98032
 (800) 248-8498 • (253) 872-0141
 FAX (253) 872-8710

NORTHEAST REGIONAL OFFICE

401 HARTLE ST.
 SAYREVILLE, NJ 08872
 (888) 217-7524 • (732) 432-6604
 FAX (732) 432-6608

APE CHINA

BUILDING No. 233, FU QIAO ROAD
 GU CUN INDUSTRIAL ZONE BAOSHAN DISTRICT
 SHANGHAI, CHINA 201906
 011-86-21-5677-1221
 FAX 011-86-21-3604-0553

LOUISIANA REGIONAL OFFICE

39266 A DOYLE DRIVE
 GONZALES, LA 70737
 (225) 644-7722
 FAX (225) 644-7626

GULF REGIONAL OFFICE

3975 FM HWY 1485
 CONROE, TX 77306
 (800) 596-2877 • (936) 271-1044
 FAX (936) 271-1046

MID-ATLANTIC REGIONAL OFFICE

500 NEWTON ROAD, #200
 VIRGINIA BEACH, VA 23462
 (866) 399-7500 • (757) 518-9740
 FAX (757) 518-9741

SOUTHEAST REGIONAL OFFICE

1345 INDUSTRIAL PARK ROAD
 MULBERRY, FL 33860
 (800) 570-3844 • (863) 324-0378
 FAX (863) 318-9409

MID-WESTERN REGIONAL OFFICE

50 GERBER INDUSTRIAL DR.
 ST. PETERS, MO 63376
 (877) 296-8044 • (636) 397-8400
 FAX (636) 278-4278

WESTERN REGIONAL OFFICE

2985 LOOMIS ROAD
 STOCKTON, CA 95205
 (888) 245-4401 • (209) 942-2166
 FAX (209) 942-2455